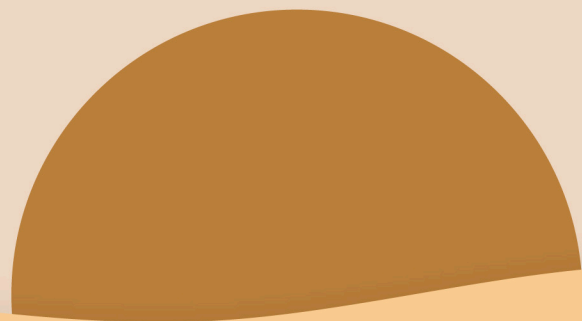
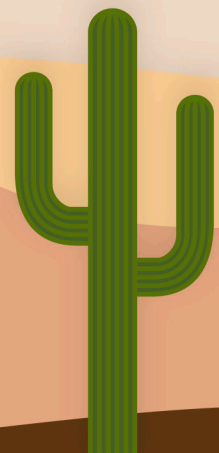


20
24



Health Leadership Conference



Growing Health Equity Success from the Grassroots

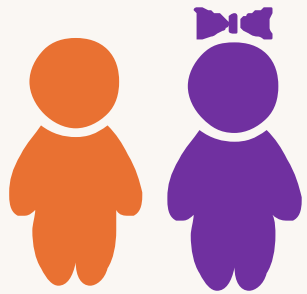
Wendy Armendariz

NOAH

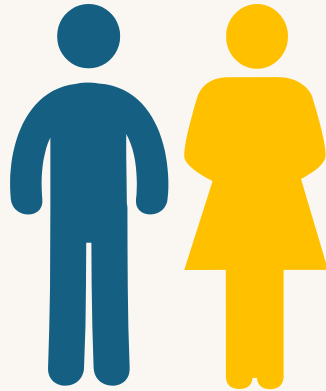
Neighborhood Outreach Access to Health



NOAH Patient Demographics



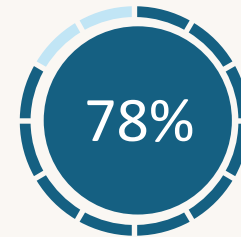
7,479
Children



39,948
Adults



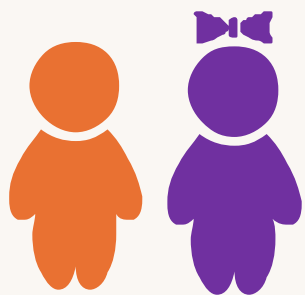
54%
Patients identified an
ethnic or racial minority



78%
Patients who are low-
income (Below 200% FPL)



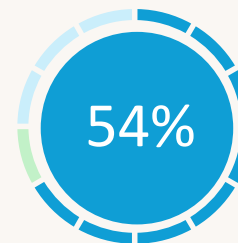
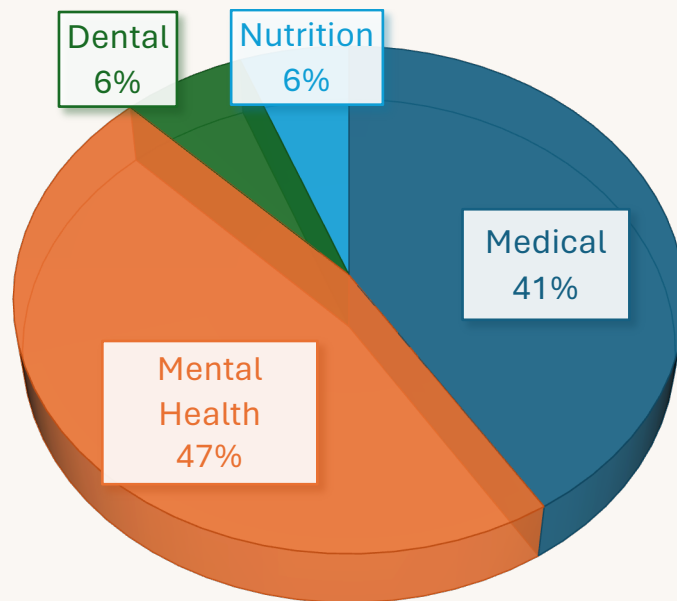
NOAH Patient Demographics



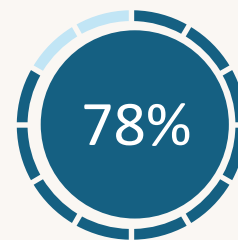
7,479
Children



39,948
Adults



54%
Patients identified an ethnic or racial minority



78%
Patients who are low-income (Below 200% FPL)



Services and Programs

- Medical
- Dental
- Pharmacy
- Counseling
- Community Resources
- Pediatric
- Nutrition
- Lab Services
- Psychiatry



Cholla Health Center
8705 E. McDowell Road
Scottsdale, AZ 85257



Copperwood Health Center I and II

I. 11851 N. 51st Avenue, Ste B-110
Glendale, AZ 85304



II. 11851 N. 51st Avenue, Ste F-140
Glendale, AZ 85304



Desert Mission Health Center
9015 N. Third Street
Phoenix, AZ 85020



Midtown Health Center
4131 N. 24th Street, Ste B-102
Phoenix, AZ 85016



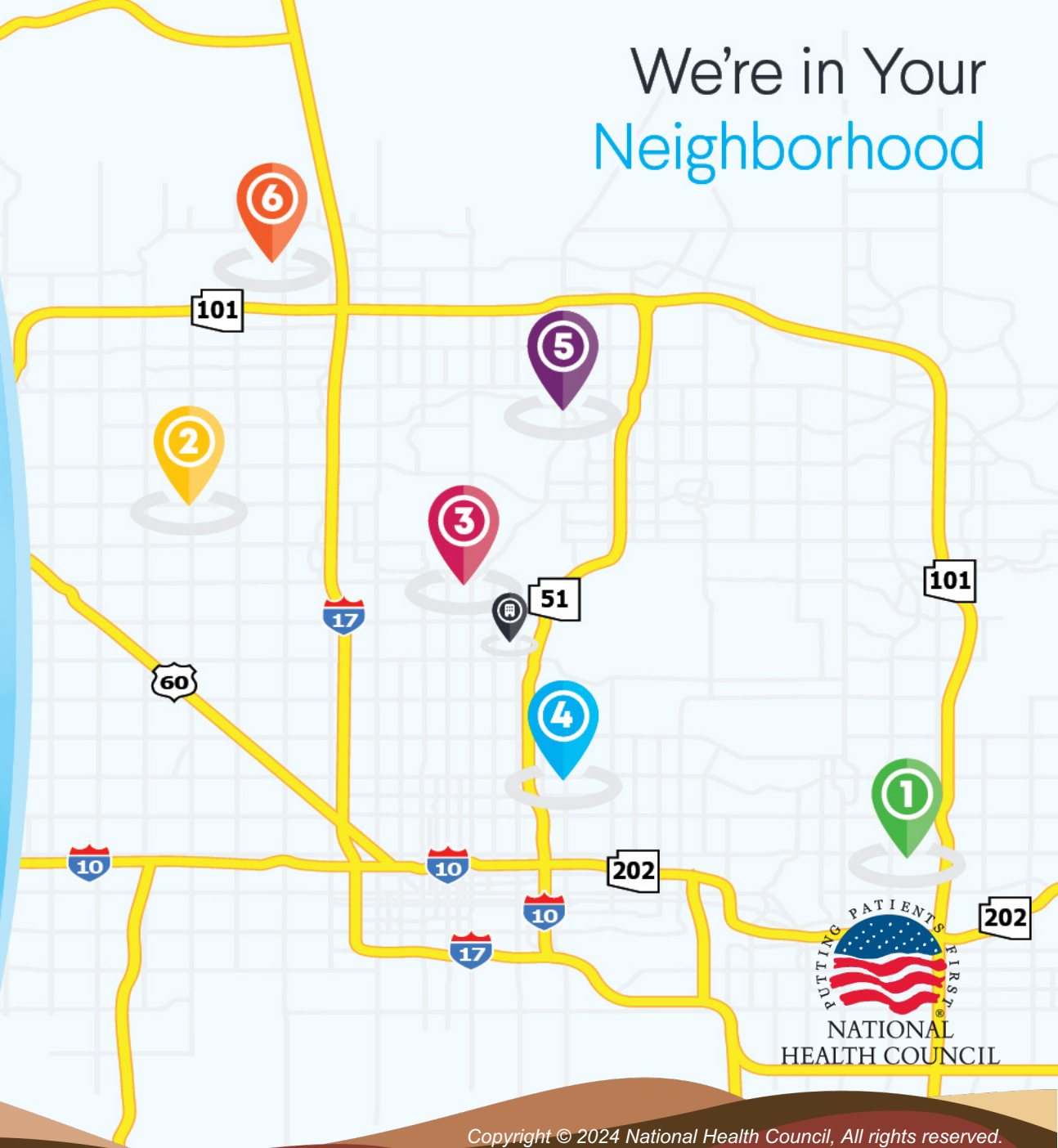
Palomino Health Center
16251 N. Cave Creek Road
Phoenix, AZ 85032



Venado Valley Health Center
20440 N. 27th Avenue
Phoenix, AZ 85027



We're in Your Neighborhood



NOAH

Food Secure



Refrigerated Food Lockers

- 16 Lockers
- Located at NOAH Cholla Health Center
- Program launched October 2023
- Funded by Molina Healthcare
- Food Donations by Farmbox
- 239 households received food in 2023





Wendy Armendariz

Chief Executive Officer

Neighborhood Outreach Access to Health (NOAH)

warmendariz@noahhelps.org

NOAHhelps.org